

COURSE FEES 2019

B.Th. PASTORAL

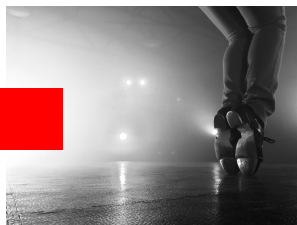
COURSE FEES

R 70 000.00 (Accommodation included)

If your heart is to serve the local church the pastoral course is the place for you. In the B.Th. Pastoral course we will prepare you not only with theology but also with the practical experience. This course will introduce you to the basic principles and practices of organisation, administration, and leadership within the context of the local church.

The pastoral training offered at Pneumatix runs over 4 years. Students will register with SATS and their course fees shall be invoiced separately by SATS directly to the student. SATS has agreed to continue offering Pneumatix students discounted rates. These rates are available directly from SATS. Pneumatix have described an ideal rate of progress but students may progress slower or faster with the SATS subjects as they see fit, or as allowed by SATS.

Pneumatix fees are R70 000 for the year and include ALL the Pneumatix-specific offerings as outline on the website. These include in-house pastoral training in youth and kids ministry; vocational ministry training in various areas of ministry including street, kids and teen ministries; mentorship and leadership training; tour ministry; radio talk-show ministry; an overseas trip in the 2nd to 4th year of study (as described on the web page).



PNEUMATIX KIT

The Pneumatix Kit consists of a Pneumatix Jacket, Hoodie, Golf-shirt and Travel Bag. Students are only allowed to travel on Pneumatix Tours with this KIT. This is compulsory for all 1st year students and payable on Registration Day. This is not included in the Course Fees.

PNEUKLEUS GAP YEAR

COURSE FEES

R 85 000.00 (One Year Course/Accommodation included)

When it comes to a gap year you want one that doesn't leave you in the gap. As the name suggests the Pneukleus program is drawn up to go beyond the outermost part of you right to center of what makes you, you.

This is exactly what Pneukleus is directed at, a clear constructive and significant year of growth and self-discovery. In Pneukleus's seventh year existence there's been many young adults entering unsure and insecure and finishing with a clearer sense of where they are headed and who they are.

Course includes Career Exposure, Spiritual Formation and Development, Soft Skill Training, Life Coaching, Adventure Learning and a overseas trip to Argentina.

BANKING DETAILS :

FOR SCHOOL FEES

ACCOUNT NAME:
Pneumatix PBO Trust
BANK NAME: ABSA Bank Limited
ACCOUNT NR:
4052438512
BRANCH CODE: 632005
SWIFT CODE:
ABSAZAJCCT

FOR STUDENT MEALS

ACCOUNT NAME:
PNX Catering
BANK NAME: ABSA Bank Limited
ACCOUNT NR:
9295565585
BRANCH CODE: 632005
SWIFT CODE:
ABSAZAJCCT

CONTACT US

OFFICE: (021) 858 1877
WHATSAPP: (072) 451 1127
COIS: (082) 445 9557
GIOVANNI: (072) 585 3166
MICHELLE: (082) 940 6450

GENERAL INFORMATION / FINANCES:
admin@pnxglobal.com

PNEUMATIX: www.pnxglobal.com

PNEUKLEUS: www.pneukleus.com

PERFORMING ARTS ACADEMY
www.performingartscapetown.co.za

CAMPUS ADDRESS: 88 Mondeor Road,
Somerset West, Western Cape, 7130

POSTAL ADDRESS: PO Box 247,
Somerset West, Western Cape, 7129

ACCOMMODATION AND TRANSPORT

The Pneumatix Campus is situated on a small holding called, Hoogeind Manor, at the foot of the Hottentots Holland Mountain range outside Somerset West. The beautifully situated small holding serve as the residential campus & official training facility to the students. Course fees also include accommodation; wireless internet; transport to and from airport or bus stations on scheduled holidays. Parking is available for students who have their own vehicles. Parking is at own risk.

MEALS ON CAMPUS

We have our own Chef who prepare well balanced meals for the students on a daily basis. There is a wide variety from healthy salads to Home Cooked meals ("Ma se Kos"). Weekly the Students get to choose meals from a menu and then order for the week ahead. These orders get invoiced to the Students account one week in advance. Meals on Campus is for the Students own account.

PERFORMANCE ARTS

COURSE FEES

(all 3 options includes Accommodation)

R 71 500.00 SINGLE MAJOR

R 74 000.00 DOUBLE MAJOR

R 79 000.00 TRIPLE MAJOR

EXTRAS

R3500 Additional Dance Teachers Qualification

The Performance Arts course is developed to train students in their area of strength, this can include, music, vocals, dancing, drama, etc. Performance Arts are also supported by workers in related fields, such as, songwriting, choreography, director, professional dancer, professional actor, make-up artist, stagecraft, vocalist and a musician.

COURSE FEE EXCLUDES

- EXAMS FEES
- DVD and course work package
- Handbooks
- Make-Up kit
- Dance gear
- Competitions
- Portfolio photo's and agent membership
- Specialised Workshops

TAX BENEFIT

PNEUMATIX PBO TRUST STATUS (Public Benefit Organisation PBO Trust - IT1422/2005)
Due to the recent amendments to Schedule 30 of the Act, we had to reapply for our PBO registration and is currently awaiting approval, which we understand is in the final phases at SARS' Tax Exemption Unit; we will be able to issue tax certificates once the approval is finalised.



METHOD OF PAYMENT

Once candidate is accepted, an enrollment fee of R3000 (within 30 days and a further R6000 by 30th November) is payable to ensure your place in the team.

OPTION 1 – EARLY SETTLEMENT

The Enrollment Fee of R6 000.00 must be paid no later than 30 November 2018. Enrollment Fee gets deducted from the Course Fee. Full settlement on or before Registration Day in January 2019 entitles a R5000.00 discount on the remaining Course Fee.

OPTION 2 – DUAL PAYMENT PLAN

The Enrollment Fee of R6 000.00 must be paid no later than 30 November 2018. Registration Fee of R9000 must be paid on Registration day 2019. Enrollment Fee and Registration Fee get deducted from the Course Fee. Remaining Fees divided in 2 Payments. First Payment 31 January 2019 and Second Payment 30 June 2019 This Payment Plan entitles a R3 000.00 discount on the Second Payment.

OPTION 3 – MONTHLY INSTALLMENTS

The Enrollment Fee of R6 000.00 must be paid no later than 30 November 2018. Registration Fee of R9000 must be paid on Registration day 2019. Enrollment Fee and Registration Fee get deducted from the Course Fee. Remaining Fees are payable on the last day of each month from JANUARY- SEPTEMBER. These payments are payable by debit order. Forms can be requested – Michelle at admin@pnxglobal.com

ALL SCHOOL FEES MUST BE PAID IN FULL BY THE END OF SEPTEMBER 2019.

ADDITIONAL COSTS

(Not Included in Course Fees)

PNEUMATIX KIT:

R3000 once off on Registration Day (Compulsory for all 1st year students).

YEAR END FUNCTION:

R500 (Compulsory for all students). Parents & Friends Welcome

GATE AND KEY DEPOSIT:

R350.00 (Refundable deposit – when hand in by the end of the year).
NB CASH ONLY (DO NOT EFT THIS MONEY)

A copy of the payment can be email to admin@pnxglobal.com, or SMS/Whatsapp to 0829406450 for attention Michelle.

Always use the Students Name and Surname as a reference on all payments made.